

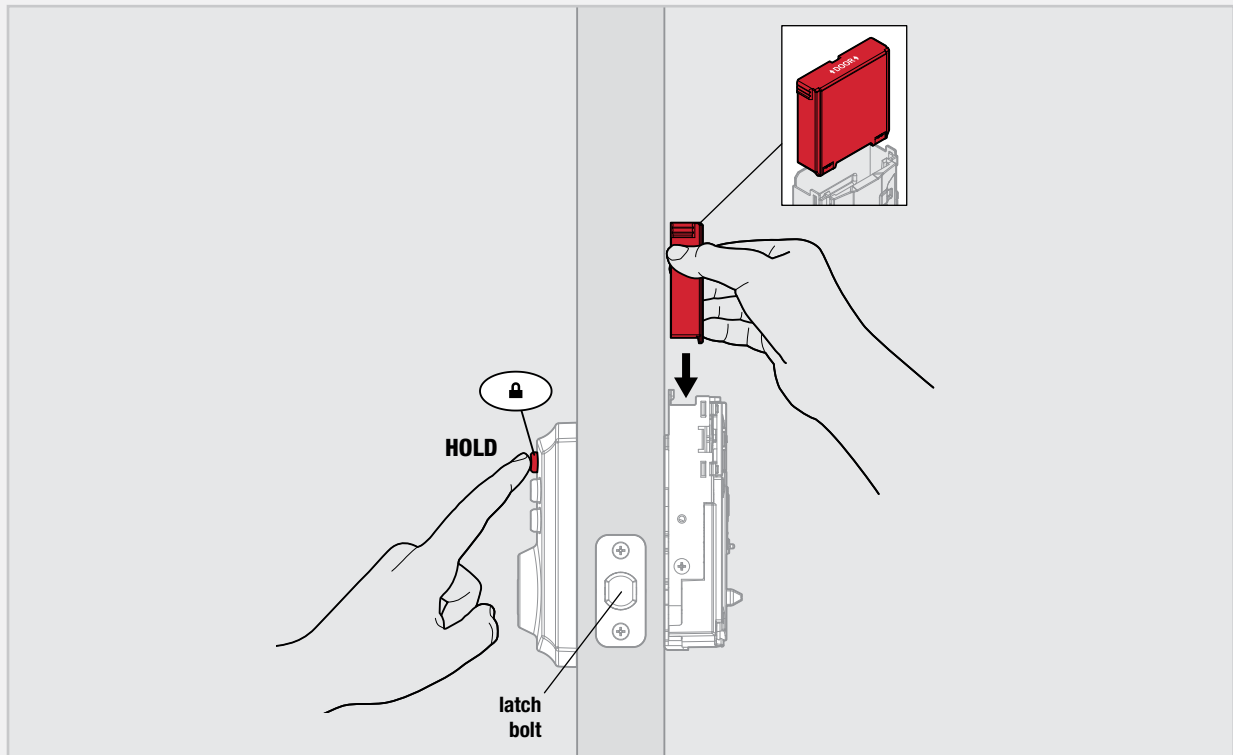
SMARTCODE 914

TOUCHPAD ELECTRONIC DEADBOLT

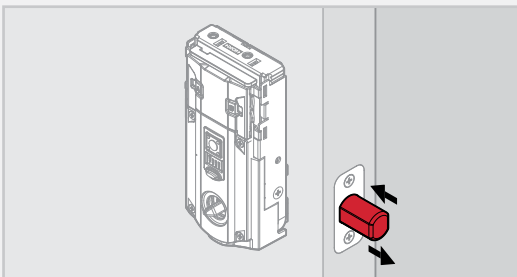
Door Handing Procedure

Perform the following procedure to teach your SmartCode lock the correct orientation of your door.

- 1 Press and hold the Lock button while installing the battery pack. Hold the button until the latch bolt starts moving on its own.



- 2 The latch bolt will retract and extend on its own a few times to learn the orientation of the door.



- 3 When the latch bolt stops moving and the Status LED flashes green, the door handing process is complete.

